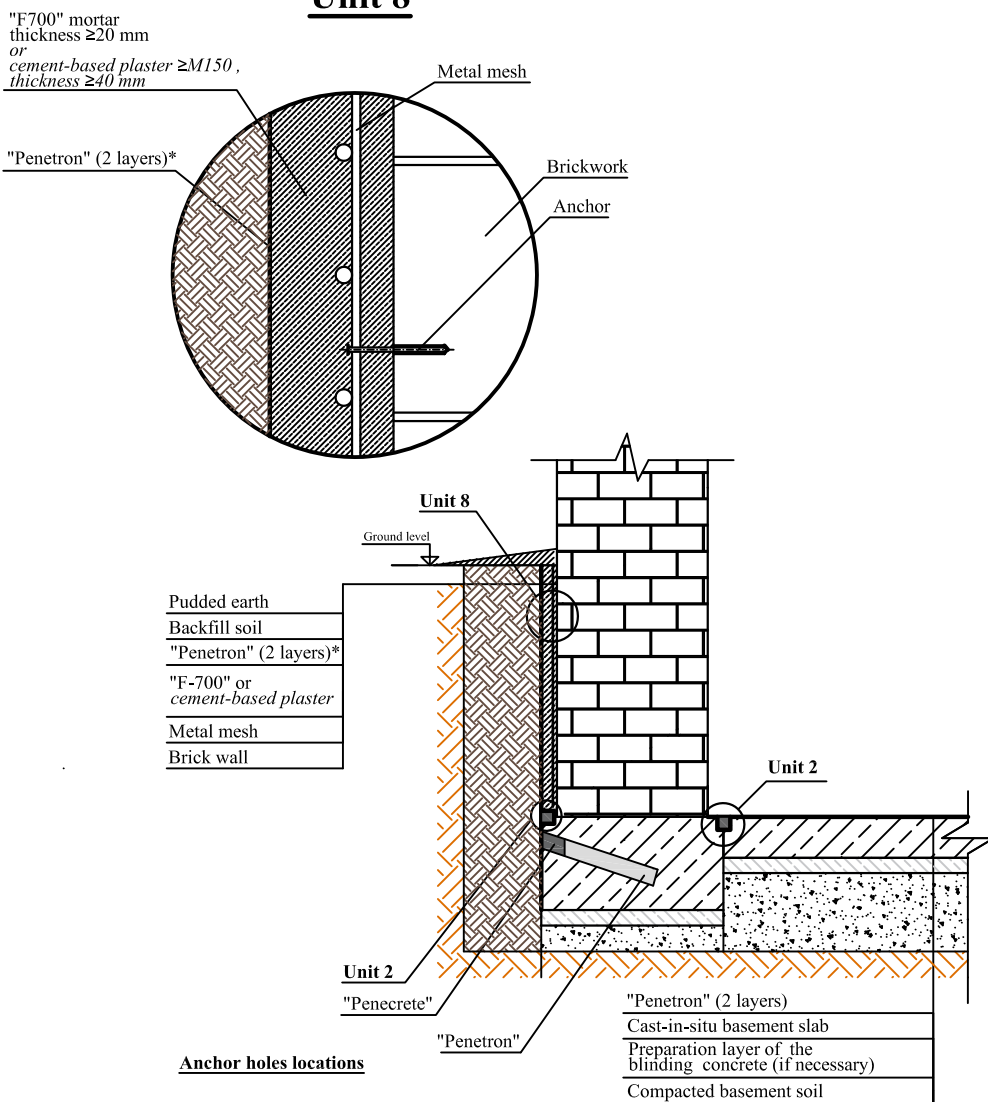
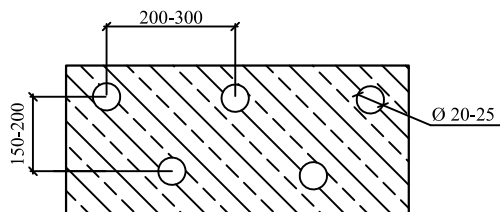


Existing structure
Masonry waterproofing

Unit 8



Anchor holes locations



*When using the "F700" mortar the surface coverage of "Penetron" slurry is not required

Application of the materials:

1. Remove earth from the outside wall surface
2. Clean the surface with high-pressure water unit.
3. Put a mesh onto the surface and fix it with anchors or concrete nails.
4. Put onto the surface F700 repair mortar with thickness of more than 20 mm.
5. Apply Penetron slurry onto the outside surface in two layers without gaps. The first layer shall be applied to damp concrete and the second - to the first layer fresh but already set. Before applying the second layer, the surface should be moistened. The consumption of the dry mix Penetron is 0.8-1.1 kg/m² of the concrete surface.
6. Use the wall-cutting machine and chisel hammer to make U-shaped racking with cross-section at least 25x25 mm along all cracks, seams, joints.
7. Clean the racking with high-pressure water spray unit or other acceptable mechanical means.
8. Prime with one layer of the mortar mix Penetron. The consumption of the dry mix Penetron is 0.1 kg/running meter at racking size 25x25 mm.
9. Prepare such amount of the Penecrete mortar that can be used within 30 minutes. Mix a dry mix with water in the following ratio: 0.17-0.18L of water per 1 kg of the Penecrete dry mix, or by volume - 1 portion of water per 5 portions of the dry mix. Stir the Penecrete mortar mix for 1-2 minutes manually or with a slow-speed drill until the thick plastic consistency is achieved.
10. Fill the racking with Penecrete mortar mix. The thickness of the applied layer of the Penecrete mortar mix shall not exceed 30 mm; deep rackings are filled with several layers. The consumption of the dry mix Penecrete is 1.5 kg/ linear meter per racking size 25x25 mm.
11. Apply Penetron slurry onto the inner surfaces in two layers without gaps. The first layer shall be applied to damp concrete and the second - to the first layer fresh but already set. Before applying the second layer, the surface should be moistened. The consumption of the dry mix Penetron is 0.8-1.1 kg/m² of the concrete surface.